

# ELECTROLINK®

Linking the Electrical Industry to you

Issue 62 November 2018



Take Off  
with Legrand

# WIN A DRONE!

SPEND \$150\* OR MORE ON LEGRAND AND HPM PRODUCTS TO GO INTO  
THE BRANCH DRAW TO WIN A DJI SPARK DRONE VALUED AT \$625

\*Spend \$150 Excl. GST on a single invoice. At participating branches.



THEN ALSO GO INTO  
THE DRAW TO  
WIN 1-OF-3  
DJI MAVIC AIR  
DRONES

WORTH  
\$1,295 EA

Conditions apply, visit [www.electrolink.com.au](http://www.electrolink.com.au). Open to Australian residents 18+. Starts: 6am AEST 01/11/18. Ends: 12pm AEST 14/12/18. Applies to eligible purchases from participating Electrolink stores nationally. 1 "DJI Spark DRONE" to be awarded per participating Electrolink store valued at \$625 RRP. Each entrant into the promotion with an eligible spend will instantly be entered into the National prize draw also with three (3) "DJI Mavic Air DRONE" to be awarded valued at \$1,295. The branch draws will be held at each participating branch at 3pm AEST 14/12/18. The final national prize draw will be held at Legrand Australia, 43-47 Lyn Parade Prestons NSW 2170, at 3pm AEST 20/12/18. All winners will be advised by email or telephone within 5 business working days of the draw. Retain purchase invoice. Limits: 1 entry per transaction. Permit: NSW LTPS/18/28887



[www.electrolink.com.au](http://www.electrolink.com.au)

Trade only supplied – All prices valid from 01/11/18 to 30/11/18


Some products may not be available at all store locations.



Advance Cables

# Advance Cables

Manufactured in Australia

 Tested & Approved in Australia to AS/NZS 4417.2

Certificate Number AZ69021904

## POLY-SAFE CABLES

Compatible With Polystyrene

### Construction:

Active, Neutral and Earth  
(Red, Black and Gn/YI)  
PVC/PVC 450/750V

Product code: FT2E113P (1.0mm<sup>2</sup>)  
FT2E7050P (1.5mm<sup>2</sup>)  
FT2E7067P (2.5mm<sup>2</sup>)  
FT2E7085P (4.0mm<sup>2</sup>)

Advance Cables High Performance PVC

- \* HMW Medical Non- Phthalate
- \* Non Migratory
- \* Low Volatility

For installations where cables may be in contact with EPS



Quality  
ISO 9001

SAI GLOBAL

greenstar

  
APPROVED CABLES INITIATIVE  
*Cabling a Safer Australia  
& New Zealand*

## CAVIUS™

### Photoelectric Smoke Alarm Wirelessly Interlinkable



- 5 year longlife lithium battery
- Interconnectable up to 32 alarms via RF technology
- 10 minute hush option
- 30 day low battery warning
- Unique "smart clip" ceiling mechanism for installation
- 85dB(A) at 3 metres
- Certified to Australian Standard AS3786-2014

**5 YEAR**  
LONGLIFE LITHIUM  
BATTERY  
(REPLACEABLE)



**\$65.60**

+\$6.56 GST = \$72.16

Part# **2104-002**

## CAVIUS™

### Thermal Heat Alarm Wirelessly Interlinkable



- 5 year longlife lithium battery
- Interconnectable up to 32 alarms via RF technology
- 10 minute hush option
- 30 day low battery warning
- Unique "smart clip" ceiling mechanism for installation
- 85dB(A) at 3 metres

**5 YEAR**  
LONGLIFE LITHIUM  
BATTERY  
(REPLACEABLE)



**\$65.60**

+\$6.56 GST = \$72.16

Part# **3104-002**

## CHAN NEL LOCK

### 1000V Pliers & Sidecutters Combi Pack



- Made in USA
- ISO 9001:2008
- Cross-hatch serrated jaws
- Anvil & knife cutting edge
- Posigrip safety handle
- Edges are lengthened for flat multi-core cables
- Hardened crimping nest
- Insulated to 1000V

**\$99.00**

+\$9.90 GST = \$108.90

Part# **14/PG-2**

rep **ELEC**  
TRADE SOLUTIONS

### Single Link Jack Chain Dispenser



- 2.5mm x 30m
- Galvanised finish
- Max load limit: 5kg
- Durable, easy to stack container

**\$22.00**

+\$2.20 GST = \$24.20

Part# **J2530**

## SOCKET & SEE

### Audible/Visual Socket Tester



- Audible & LED indication
- Microprocessor control with built-in 'self check' feature
- Tri-coloured LEDs (green, red & orange) give clear indication of good wiring plus 17 possible wiring fault conditions
- No battery required, operates from mains power

**\$44.90**

+\$4.49 GST = \$49.39

Part# **SOK32**

## FLUKE

### T6 Electrical Tester with FieldSense technology



- Measure voltage to 1000V AC through the open fork, without test leads
- No need to open covers or remove wire nuts
- Simultaneously measure voltage & current
- Works with wires up to AWG 4/0 (120 mm<sup>2</sup>) with a 17.8mm jaw opening
- HOLD button temporarily freezes the reading for easy viewing
- Easy to read display with backlight

**\$349.00**

+\$34.90 GST = \$383.90

Part# **FLUT61000**



**:hager**

**Tough  
weatherproof range**

**Outdoor elegance**

# Built to last



**WBWP2S**  
Weatherproof  
double socket  
10A IP53

**\$30.25**

(\$27.50 +  
\$2.75 GST)

Our range of IP66 switches and IP53 socket outlets have full UV stability and are engineered to withstand the tough environmental conditions that Australian weather can demand. Internally designed for ease of installation and flexibility of use, the weatherproof range provides a long awaited fresh style and elegant aesthetic.

[hagerelectro.com.au](http://hagerelectro.com.au)

**:hager**



# THE POWER OF LED



**ACS435TBD4K** **\$55.00**  
36W 1200 mm + \$5.50 GST = \$60.50

**BSD436CT** **\$49.00**  
36W 1200 mm + \$4.90 GST = \$53.90

**BSD4364KMS** **\$74.50**  
36W 1200 mm + \$7.45 GST = \$81.95

**FPE435W4K** **\$47.50**  
35W 1200 mm + \$4.75 GST = \$52.25

**CLD18WCT0130** **\$30.00**  
18W Ø300 mm + \$3.00 GST = \$33.00

**CLD24WCT0140** **\$45.00**  
24W Ø400 mm + \$4.50 GST = \$49.50

**UFO150CEA573B09B** **\$169.00**  
150W Ø330 mm + \$16.90 GST = \$185.90

**FLA50G15K** **\$47.00**  
50W < 1 kg + \$4.70 GST = \$51.70

**FLA100G15K** **\$110.00**  
100W < 2 kg + \$11.00 GST = \$121.00

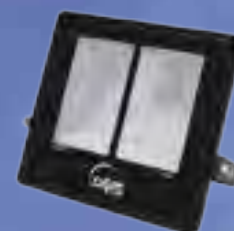
**FLA200G15K** **\$189.00**  
200W < 4 kg + \$18.90 GST = \$207.90



ADJUSTABLE CCT



ADJUSTABLE CCT



Head into Electrolink and pick up a Clipsal bargain.



**WHA120-RG**  
 SWITCH 1G 1P H/PROOF 250V  
 20A  
**\$12<sup>95</sup>** +\$1.30 GST  
**\$14<sup>25</sup>** incl. GST



**WHB320-RG**  
 ISOLATOR 1G 3P H/PROOF  
 440V 20A  
**\$22<sup>95</sup>** +\$2.30 GST  
**\$25<sup>25</sup>** incl. GST



**753CF1**  
 PIR SENSOR, 360DEG,  
 CEILING, SINGLE CHAN  
**\$67<sup>00</sup>** +\$6.70 GST  
**\$73<sup>70</sup>** incl. GST



**32ELEDM-WE**  
 LED DIMMER MECHANISM,  
 30MECH  
**\$42<sup>90</sup>** +\$4.29 GST  
**\$47<sup>19</sup>** incl. GST



**9025TCM-GY**  
 CONDUIT TURBO PVC M/D  
 25MM/50M  
**\$43<sup>50</sup>** +\$4.35 GST  
**\$47<sup>85</sup>** incl. GST



**9032TCM-GY**  
 CONDUIT TURBO PVC M/D  
 32MM/25M  
**\$50<sup>00</sup>** +\$5.00 GST  
**\$55<sup>00</sup>** incl. GST



**9020TCM-GY**  
 CONDUIT TURBO PVC M/D  
 20MM/50M  
**\$36<sup>50</sup>** +\$3.65 GST  
**\$40<sup>15</sup>** incl. GST

**ventair**<sup>tm</sup>  
THE AIR MOVEMENT SPECIALISTS

# SPYDA

## THE CEILING FAN REVOLUTION

Polycarbonate construction with UV protection and durable corrosion proof components allows for the Spyda to be safely used for indoor/covered outdoor and coastal areas.



1200MM

1400MM

Model	Style	Price
SPY1253WH	1250mm White	\$176.20 + \$17.62 GST = <b>\$193.80</b>
SPY1423WH	1400mm White	\$214.15 + \$21.42 GST = <b>\$235.55</b>

# Harmony II

1220MM NEW GENERATION CEILING FAN

- Latest ceiling fan technology and design
- Excellent air circulation and cooling effect
- High Quality 18W replaceable LED Light option
- Quick connect wiring and fittings for easy install
- Suitable for indoor and covered outdoor applications

Model	Style	Price
HAR1204WH	White	\$149.95 + \$15.00 GST = <b>\$164.95</b>
HAR1204WH-L	White with LED Light	\$202.45 + \$20.25 GST = <b>\$222.70</b>

# Royale II

1320MM NEW GENERATION CEILING FAN

- Pre-balanced for smoother, quieter performance
- Even higher air circulation and cooling effect
- High Quality 18W replaceable LED Light option
- Premium long life motor and components
- Suitable for indoor and covered outdoor applications

Model	Style	Price
ROY1304WH	White	\$187.55 + \$18.76 GST = <b>\$206.30</b>
ROY1304WH-L	White with LED Light	\$239.95 + \$24.00 GST = <b>\$263.95</b>



# Malibu IP55

1320MM NEW GENERATION OUTDOOR CEILING FAN

- IP55 Dust and Water protection rating
- Designed specifically for outdoor and coastal applications
- Engineered for large area air circulation
- Quick connect wiring and fittings for easy install

Model	Colour	Price
MAL1404WH	White	\$367.35 + \$36.74 GST = <b>\$404.10</b>
MAL1404TI	Titanium	\$367.35 + \$36.74 GST = <b>\$404.10</b>

**ventair**<sup>tm</sup>  
THE AIR MOVEMENT SPECIALISTS

For more information, visit  
[www.ventair.com.au](http://www.ventair.com.au)





# BORN & BRED AUSTRALIAN SINCE 1955



**B&R Enclosures are committed to delivering safe, accessible and sustainable enclosure solutions.**

With over 60 years experience in Australian manufacturing, we've built excellence and innovation into everything we do. This is why B&R is the most trusted brand for enclosure and cabinet solutions.

[brenclosures.com.au](http://brenclosures.com.au)



## LIGHTING & ENERGY EFFICIENCY

### PRESENCE DETECTOR 360° 1 CHANNEL CEILING MOUNT

\$85<sup>00</sup> + \$8<sup>00</sup> GST =

**\$93.50**

Part No. CPD-360



### PRESENCE DETECTOR 360° 2 CHANNEL CEILING MOUNT

\$115.00<sup>00</sup> + \$11<sup>00</sup> GST =

**\$126.50**

Part No. CPD-360/2



### TIME SWITCH ANALOGUE DIN MOUNT 24HR

\$70<sup>00</sup> + \$7<sup>00</sup> GST =

**\$77.00**

Part No. CTS-160



### TIME SWITCH ANALOGUE DIN MOUNT 24HR - BATTERY POWER RESERVE

\$56<sup>00</sup> + \$5<sup>00</sup> GST =

**\$61.60**

Part No. CTS-180



### TIME SWITCH DIGITAL 7 DAY SINGLE MODULE

\$115<sup>00</sup> + \$11<sup>00</sup> GST =

**\$126.50**

Part No. CTS-608



### TIME SWITCH ANALOGUE 24 HR

\$61<sup>00</sup> + \$6<sup>10</sup> GST =

**\$67.10**

Part No. CTS-64B



### TIME SWITCH ANALOGUE 24 HR BATTERY POWER RESERVE

\$79<sup>00</sup> + \$7<sup>00</sup> GST =

**\$86.90**

Part No. CTS-64BQ



### TIME SWITCH ANALOGUE 24 HR PANEL MOUNT

\$61<sup>00</sup> + \$6<sup>10</sup> GST =

**\$67.10**

Part No. CTS-UNI45



### SMART SWITCH DIGITAL 1 CHANNEL

189<sup>00</sup> + \$18<sup>00</sup> GST =

**\$207.90**

Part No. CTS-C15



### SMART SWITCH DIGITAL 2 CHANNEL

\$205<sup>00</sup> + \$20<sup>00</sup> GST =

**\$225.50**

Part No. CTS-C25



# EASYSPOOL™

TRADIES' BEST MATE

GET YOUR  
JOB DONE  
**QUICKER!**

**EASYSPOOL™ is a new innovation that simplifies cable handling and installation.**

**Designed and engineered by Nexans Olex for Australian Electrical Contractors.**



*Designed to hold maximum 150kg*



**Easy to load**  
up to 25kg per arm



**Easy to manage**  
Eliminates the need to carry spools



**Easy to move**  
Truck – jobsite – truck



**Easy to reel**  
Acts as an A frame



**Easy to store**  
Minimises space/collapsible



**Removable toolbox**



**3 Wheel accessory**



SCAN THE QR CODES TO VIEW THE LATEST VIDEOS



DOWNLOAD THE BROCHURE!  
<https://bit.ly/2OZ5IAp>

**TrustOlex.**

CONTACT NEXANS OLEX TO FIND OUT MORE  
CALL 1300 CABLES | [www.olex.com.au](http://www.olex.com.au)



**EV-MERCURY-40M-BASIC**

MERCURY JUMBO BASIC 40M EXIT SIGN  
SKU: 11270

**\$205.00**  
+ \$20.50 GST = \$225.50



**EV-MERCURY-BASIC**

MERCURY BASIC EXIT SIGN  
SKU: 11258

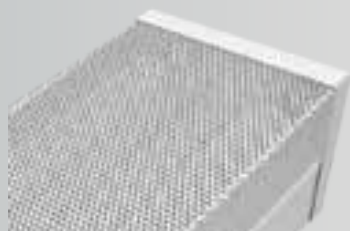
**\$66.00**  
+ \$6.60 GST = \$72.60



**EV-LEDFIRE-BASIC**

LEDFIRE BASIC  
SKU: 11190

**\$55.00**  
+ \$5.50 GST = \$60.50



**EV-CLAYMORE-1200-DIFF-LITE**

CLAYMORE LITE 42W TWIN DIFFUSED 1200MM LED WIDE  
BODY BATTEN  
SKU: 11149

**\$55.00**  
+ \$5.50 GST = \$60.50



**EV-42W-DIFF-LED-EM-LITE**

CLAYMORE LITE EMERGENCY 42W TWIN DIFFUSED  
1200MM LED WIDE BODY BATTEN  
SKU: 11310

**\$119.00**  
+ \$11.90 GST = \$130.90

# Energizer

## 1209

**EVEREADY SUPER HEAVY DUTY 6V LANTERN BATTERY**

\$7.50 + \$0.75 GST

**\$8.25**



## HCSW21

**ENERGIZER HARDCASE PIVOT LIGHT** has a unique 175 degree pivoting function, 2 light modes, built-in magnetic base, is weatherproof & has a shatterproof lens. Batteries supplied.

\$46.00 + \$4.60 GST

**\$50.60**



## HCLA41

**ENERGIZER HARDCASE WORKLIGHT** is the toughest flashlight you'll ever need. Batteries supplied.

\$32.00 + \$3.20 GST

**\$35.20**



## HDE32

**ENERGIZER VISION ULTRA HEADLIGHT**

This hands-free Headlight is Energizers brightest headlight yet. Batteries supplied.

\$32.50 + \$3.25 GST

**\$35.75**



## HCHD31

**ENERGIZER HARDCASE PRO HEADLIGHT** designed to fit most industrial helmets, it's ideal for construction projects. Batteries supplied.

\$49.00 + \$4.90 GST

**\$53.90**

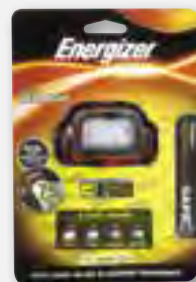


## MSHD3AA

**ENERGIZER INTRINSICALLY SAFE HEADLIGHT.** This high-performance headlight offers 4 light modes, built tough & provides a reliable handsfree lighting solution.

\$85.00 + \$8.50 GST

**\$93.50**



## HCMU11

**ENERGIZER HARDCASE MULTI USE LIGHT**

This professional LED Multi Use weatherproof light is tough & durable with strong magnets for hands free operation & a pivoting clip for directional lighting. Battery supplied.

\$22.00 + \$2.20 GST

**\$24.20**



## DOLLN6VQ

**DOLPHIN MK7 LANTERN.** 200 Lumens (twice as bright as MK6 LED model), 65 hours run time, 200m + beam distance, impact resistant & floats for easy recovery.

\$15.50 + \$1.55 GST

**\$17.05**





Check out our products online at [mercator.com.au](http://mercator.com.au)

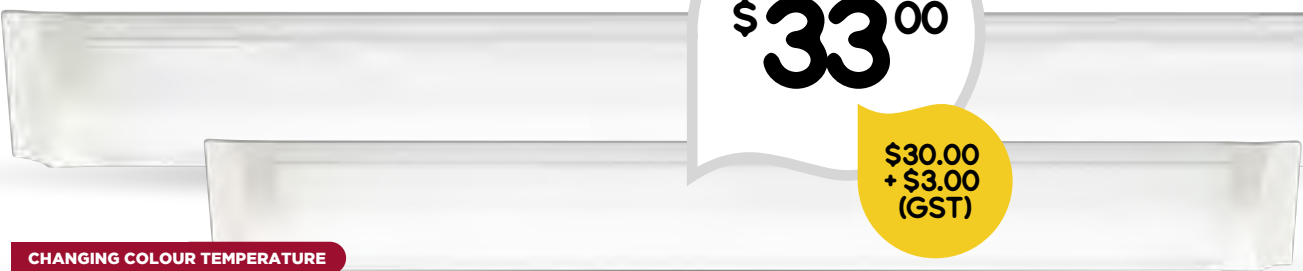
#askformercator

FROM \$99<sup>00</sup>  
\$90.00 + \$9.00 (GST)



**MIDAS**  
2Lt bathroom heater with exhaust. 4Lt version also available \$115.00 + \$11.50 GST = \$126.50

FROM \$33<sup>00</sup>  
\$30.00 + \$3.00 (GST)



CHANGING COLOUR TEMPERATURE

**NEO**  
Easy to install 28W LED wall light. Switch between 3000K, 4000K & 5000K. Also available in 40W version \$40.00 + 4.00 GST = \$44.00.

FROM \$24<sup>20</sup>  
\$22.00 + \$2.20 (GST)



FROM \$12<sup>10</sup>  
\$11.00 + \$1.10 (GST)



**Apollo**  
9W LED downlight. Switch between 3000K, 4000K & 5000K.

**FRANKLIN**  
18W LED ceiling light. Switch between 3000K, 4000K & 5000K. Also available in 24W \$27.00 + \$2.70 GST = \$29.70



For more information on Mercator products, find us on:



## The Biggest Range of Ventilation Products Supplied Exclusively to the Trade



### STANDARD MODELS

RESPF150 (10" unit)  
**\$96.69** (\$87.90+\$8.79 GST)

RESPF8 (8" unit)  
**\$89.21** (\$81.10+\$8.11 GST)

### TIMER MODELS

RESPF150T (10" unit)  
**\$144.16** (\$131.05+\$13.11 GST)

RESPF8-T (8" unit)  
**\$132.00** (\$120.00+\$12.00 GST)



### 10" LED GRILLES

RESPG150SQWH-LED (Square)  
RESPG150RNWH-LED (Round)

### 8" LED GRILLES

RESPG8-SQWH-LED (Square)  
RESPG8-RNWH-LED (Round)  
**\$44.61** (\$40.55+\$4.06 GST)

## RAPID RESPONSE CEILING FAN

- // 8" model is ideal for odour and dampness removal from toilets, ensuites and cupboards.
- // 10" model provides stronger air flow performance to ensure steam is cleared from rooms such as bathrooms and ensuites.
- // Both models available with 3-15 minute adjustable run-on timer.

### 10" STANDARD GRILLES

RESPG150SQWH (Square)  
RESPG150RNWH (Round)

### 8" STANDARD GRILLES

RESPG8-SQWH (Square)  
RESPG8-RNWH (Round)  
**\$10.29** (\$9.35+\$0.94 GST)



## RAPID RESPONSE GRILLES

- // Available in 2 sizes to suit 8" and 10" Rapid Response header box fan models.
- // Both 8" and 10" Rapid Response Grilles available with LED light.
- // LED light and Rapid Response fan can be controlled separately.
- // Black grilles available for 10" models (round and square).



### STAND MOUNTED

PSET634-03SP  
**\$256.52** (\$233.20+\$23.32 GST)

### WALL MOUNTED

PWET634-03SP  
**\$214.50** (\$195.00+\$19.50 GST)



## PEDESTAL & WALL MOUNTED COOLING FANS

- // 90° oscillating head with 20° up and down tilt.
- // 3 operating speeds to suit specific cooling needs.
- // Height of the stand mounted unit is adjustable from 1400 to 1660mm.
- // Misting kit accessory available for both Pedestal and Wall mount models.



### RAPID DRY JET - WHITE

RAPJET-W  
**\$1036.48** (\$942.25 + \$94.23 GST)

### RAPID DRY JET - SILVER

RAPJET-S  
**\$1122.28** (\$1020.25+\$102.03 GST)

## RAPID DRY JET

- // Hygienic hands free operation for heavy duty high traffic use.
- // Unique high speed motor for low power consumption.
- // Features an excess water tray that helps to minimize water landing on the floor.



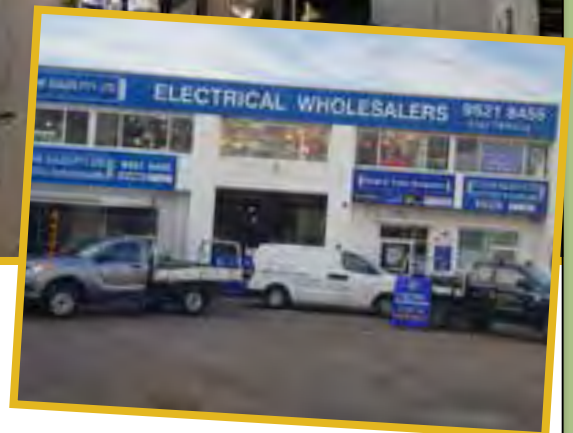
AJ&PM Sales is a family owned and managed electrical wholesaler run by 3-generations of family, who have been a part of Electrolink for over 14 years. First emerging into the electrical industry in 1989 by selling tubes out of the family garage, AJ&PM Sales has expanded over NSW with a total of three branches in Kirrawee, Bexley and Fairy Meadow. As a 100% Australian owned business, we are devoted to expeditiously delivering high quality products with attentive and friendly service.

Our wholesale division is staffed with a mixture of youth and experience which enables us to service a vast range of customers, whilst being on top of all the latest technologies and having the expertise to deal with the most demanding projects. Our industry knowledge and customer service makes us one of the leaders in electrical wholesaling with our fleet of vehicles servicing Sydney and the South Coast.

In 2016 AJ's Kirrawee branch opened a public lighting showroom displaying a wide range of decorative, interior and exterior lighting solutions focusing on innovative LED products. Our showroom allows customers to properly compare products and provides a plethora of ideas and inspiration for their homes or projects. We also provide 'home-package deals' for home builders or renovators, bundling all their electrical needs into one affordable and quality deal. Our showroom is now displaying a vast array of:

- LED Downlights
- Pendant Lights
- Ceiling Fans
- Bathroom exhaust fans and heaters
- Light switches and powerpoints
- Table and floor lamps
- Garden lighting
- Home automation systems
- Security systems and intercoms

And much more...





## STORE LOCATIONS

### ACT

#### Belconnen

Project Lighting P/L  
25 Egan Court, Belconnen 2617  
Tel: (02) 6251 4311 Fax: (02) 6251 6159

#### Phillip

Project Lighting P/L  
39 Townshend Street, Phillip 2606  
Tel: (02) 6282 2588 Fax: (02) 6285 4064

#### Tuggeranong

Project Lighting P/L  
Unit 6, Tuggeranong Square, Reed Street,  
Tuggeranong 2900  
Tel: (02) 6293 2896 Fax: (02) 6293 2897

### NSW REGIONAL

#### Batemans Bay

Project Lighting P/L  
Unit 5, 19 Hughes Street,  
Batemans Bay 2536  
Tel: (02) 4472 4744 Fax: (02) 4472 8597

#### Broken Hill

Shannon Electrics Pty Ltd  
106 Galena Street, Broken Hill 2880  
Tel: (08) 8088 2988 Fax: (08) 8088 3206

#### Fairy Meadow

AJ & PM Sales  
2 / 99 Princes Highway, Fairy Meadow 2519  
Tel: (02) 4229 2200 Fax: (02) 4229 2400

#### Goulburn

Goulburn Electrical Wholesaler Pty Ltd  
21 Bradley Street, Goulburn 2580  
Tel: (02) 4822 7977 Fax: (02) 4822 7988

#### Maitland

Davis & Spence Pty Ltd  
134 - 136 Melbourne Street,  
East Maitland 2323  
Tel: (02) 4933 5388 Fax: (02) 4933 5811

#### Mittagong

Bowral Electrical Wholesaler  
Cnr Cavendish & Davy Streets,  
Mittagong 2575  
Tel: (02) 4871 3267 Fax: (02) 4871 3276

#### Muswellbrook

Muswellbrook Electrical Supplies Pty Ltd  
37 Market St, Muswellbrook 2333  
Tel: (02) 6542 5066 Fax: (02) 6543 1310

#### Newcastle

Davis & Spence Pty Ltd  
136 Hannell St, Wickham 2293  
Tel: (02) 4969 2566 Fax: (02) 4962 1123

#### Orange

Advantage Electrical Supplies  
84-86 Endsleigh Avenue, Orange 2800  
Tel: (02) 6369 0855 Fax: (02) 6369 0833

#### Queanbeyan

Project Lighting P/L  
110 Crawford Street, Queanbeyan 2620  
Tel: (02) 6299 7076 Fax: (02) 6299 7081

#### Thornton

Alstra Electrical Wholesalers  
3/2 Huntingdale Drive, Thornton 2322  
Tel: (02) 4966 8100 Fax: (02) 4966 8400

#### Tumut

Switched-On Electrical Supplies  
48 Adelong Road, Tumut 2720  
Tel: (02) 6947 9333 Fax: (02) 6947 9344

#### Ulladulla

Project Lighting P/L  
2A Parson Street, Ulladulla 2539  
Tel: (02) 4455 4025 Fax: (02) 4455 3393

#### Warners Bay

Davis & Spence Pty Ltd  
Unit 2, 8 Walker St, Warners Bay 2282  
Tel: (02) 4953 6092 Fax: (02) 4953 6234

#### Wentworth Falls

AEV Blue Mountains  
1 Falls Road, Wentworth Falls 2782  
Tel: (02) 4757 2777 Fax: (02) 4757 2511

#### West Gosford

City Electric Supply  
Unit 6 / 284 - 286 Manns Road,  
West Gosford 2250  
Tel: (02) 4324 0955 Fax: (02) 4324 0222

### NSW SYDNEY METRO

#### Alexandria

Ritera Electrical Pty Ltd  
8 / 37 - 41 O'Riordan St, Alexandria 2015  
Tel: (02) 9318 0966 Fax: (02) 9318 0887

#### Bexley

AJ & PM Sales  
Unit 1/624 Forest Rd, Bexley 2207  
Tel: (02) 9588 2444 Fax: (02) 9588 2422

#### Chatswood

City Electric Supply  
5C Gibbes Street, Chatswood 2067  
Tel: (02) 9417 0377 Fax: (02) 9417 0388

#### Concord West

Zoltan Electrical & Plumbing Supplies  
399 Concord Road, Concord West 2138  
Tel: (02) 8765 8871 Fax: (02) 8765 8879

#### Gladesville

Ritera Electrical Pty Ltd  
22/43 College St, Gladesville 2111  
Tel: (02) 9879 5444 Fax: (02) 9879 5544

#### Glendenning

Hastings Electrical Pty Ltd  
Unit 8, 155 Glendenning Road,  
Glendenning 2761  
Tel: (02) 9625 7744 Fax: (02) 9625 7755

#### Kirrawee

AJ & PM Sales  
63 Waratah Street, Kirrawee 2232  
Tel: (02) 9521 8455 Fax: (02) 9521 8118

#### Matraville

E & S Electrical Wholesalers  
Unit 4, 1 Perry Street, Matraville 2036  
Tel: (02) 9695 6700 Fax: (02) 9666 7452

#### McGraths Hill

Aussie Electrical Pty Ltd  
Unit 1, 21 Groves Ave, McGraths Hill 2756  
Tel: (02) 4577 8444 Fax: (02) 4577 9869

#### Moorebank

Ablec Trading  
1 / 163 Newbridge Road,  
Moorebank 2170  
Tel: (02) 9602 6599 Fax: (02) 9600 7914

#### Awe-Sim Electrical Wholesalers

Unit 1, 86 Heathcote Road,  
Moorebank 2170  
Tel: (02) 9824 0511 Fax: (02) 9824 1611

#### Penrith

AEV Penrith  
Unit 2 / 126-128 Batt Street,  
Penrith 2750  
Tel: (02) 4731 2355 Fax: (02) 4721 7705

#### Awe-Sim Electrical Wholesalers

9 Robertson Place, Penrith 2750  
Tel: (02) 4725 5444 Fax: (02) 4725 5499

#### Riverstone

Direct Electrical Supplies  
Unit 1 / 2 Edward St, Riverstone 2765  
Tel: (02) 9627 5596 Fax: (02) 9838 3110

#### Riverwood

E & S Electrical Wholesalers  
10-12 Wiggs Road, Riverwood NSW 2210  
Tel: (02) 9758 9100 Fax: (02) 9758 9011

#### Seven Hills

City Electric Supply  
70 / 45 Powers Road, Seven Hills 2147  
Tel: (02) 9838 7122 Fax: (02) 9838 4822

#### Compass Electrical & Data Supplies Pty Ltd

Unit 2, 114 Station Road, Seven Hills 2147  
Tel: (02) 9674 4344 Fax: (02) 9674 4355

#### Silverwater

City Electric Supply  
1A, 137 Silverwater Road, Silverwater 2128  
Tel: (02) 9648 3488 Fax: (02) 9648 3797

#### St Marys

AEV Electrical Wholesalers  
Unit 2, 9-11 Gallipoli Street, St Marys 2760  
Tel: (02) 9833 4100 Fax: (02) 9833 4111

#### Taren Point

City Electric Supply  
Unit 5 / 43 Bay Road, Taren Point 2229  
Tel: (02) 9531 0622 Fax: (02) 9531 7522

#### West Ryde

ACG Pty Ltd  
93 Ryedale Road, West Ryde 2114  
Tel: (02) 9807 3655 Fax: (02) 9808 3510

### QLD COUNTRY

#### Cairns

Allpower Electrical Wholesalers  
132 Scott Street, Bungalow 4870  
Tel: (07) 4041 3030 Fax: (07) 4041 3035

### VICTORIA

#### Epping

Site Supply Australia Pty Ltd  
36 Yale Drive, Epping 3076  
Tel: (03) 9401 2300

### WA

#### Balcatta

City Electric Supply  
Unit 3 / 96 - 98 Erindale Road,  
Balcatta 6021  
Tel: (08) 9240 7788 Fax: (08) 9240 8853

#### Bibra Lake

City Electric Supply  
Unit 1 / 24 Sustainable Avenue,  
Bibra Lake 6163  
Tel: (08) 9418 3077 Fax: (08) 9418 4077

#### Broome

Advanced Electrical Equipment P/L  
28 Hunter St, Broome 6725  
Tel: (08) 9192 1500 Fax: (08) 9192 2455

#### Bunbury

Advanced Electrical Equipment P/L  
67 McCombe Road, Bunbury 6230  
Tel: (02) 9726 0222 Fax: (08) 9726 0555

#### Geraldton

Advanced Electrical Equipment P/L  
146 Flores Road, Webberton 6530  
Tel: (08) 9921 2555 Fax: (08) 9921 4822

#### Joondalup

Advanced Electrical Equipment P/L  
Unit 3, 97 Winton Road,  
Joondalup 6027  
Tel: (08) 9300 9476 Fax: (08) 9300 9879

#### Kewdale

Advanced Electrical Equipment P/L  
6 Marchesi Street, Kewdale 6015  
Tel: (08) 9356 7944 Fax: (08) 9356 7955

#### Malaga

Advanced Electrical Equipment P/L  
Unit 1, 1 Holder Way, Malaga 6062  
Tel: (08) 6240 5200 Fax: (08) 6240 5255

#### Midland

City Electric Supply  
Unit 1 / 12 Lloyd Street, Midland 6056  
Tel: (08) 9250 1444 Fax: (08) 9250 4591

#### Osborne Park

Advanced Electrical Equipment P/L  
39 Collingwood St, Osborne Park 6017  
Tel: (08) 9445 1711 Fax: (08) 9446 3031

#### Port Kennedy

City Electric Supply  
4 / 2 Blackburn Drive,  
Port Kennedy 6172  
Tel: (08) 9524 6011 Fax: (02) 9524 6674

#### Wangara

City Electric Supply  
Unit 12 / 90 Distinction Road,  
Wangara 6065  
Tel: (08) 9303 2922 Fax: (02) 9303 2933

#### West Perth

City Electric Supply  
114 - 122 Railway Street,  
West Perth 6005  
Tel: (08) 9226 1452 Fax: (08) 9324 2190



[www.electrolink.com.au](http://www.electrolink.com.au)

Electrolink Administration

Unit 1, 91-95 Fitzroy Street, GRAFTON NSW 2460

Ph: (02) 6643 3330 Fax: (02) 6643 3331